

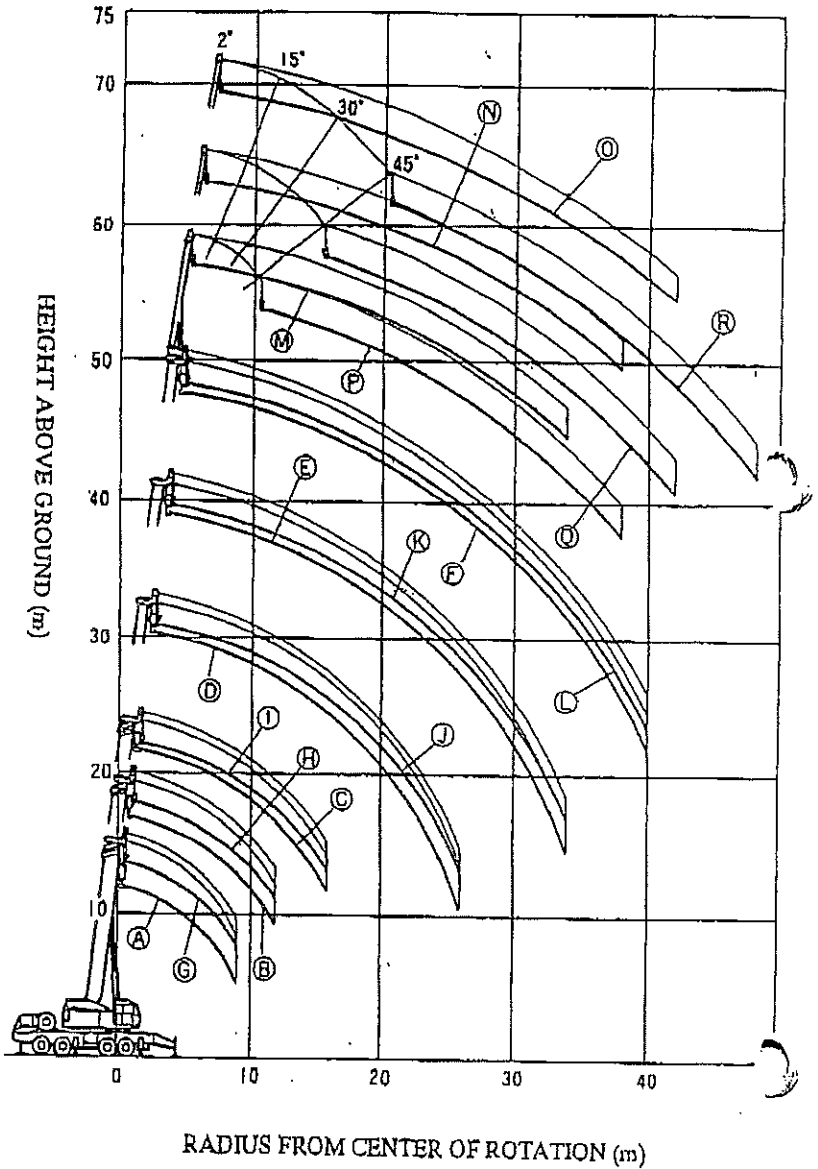
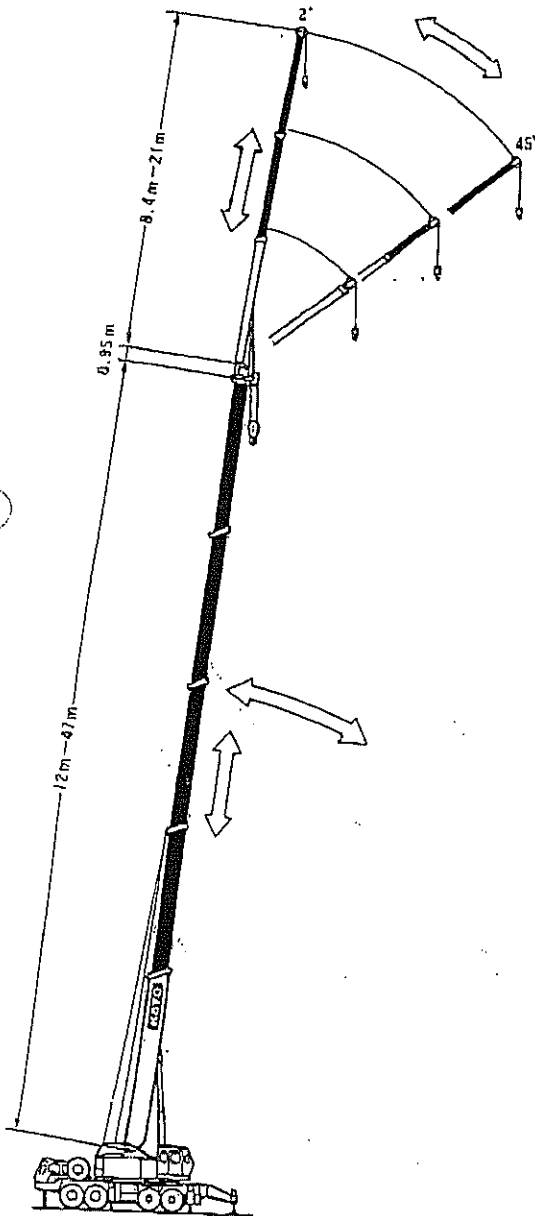
More Power Than Ever! 1000

**NK-1000**

**KATO**

5. Hydraulic system
- Oil pump : 4 sections high-pressure pump
  - Hoisting motor : Axial plunger type
  - Slewing motor : Axial plunger type
  - Control valve : Multiple control valves. Automatic return type
  - Cylinder : High-pressure double acting type
  - Oil reservoir capacity : 1075 l
6. Safety device : ACS (Automatic crane stopper with voice alarm)
- Working range limit mode
  - Outriggers extension automatic input sensor
  - Boom falling prevention device
  - Overhoist prevention device
  - Drum lock device
  - Drum hold safety device
  - Automatic winch brake
  - Irregular winding prevention device
  - Drum turning indicator
  - Hydraulic safety valve
  - Outriggers lock device
  - Boom angle indicator
  - Slewing lock device
  - Slewing warning lamp & indicator
7. Standard equipments : Room heater, fan and AM/FM radio with clock in the crane cab, Oil cooler
8. Optional equipment : Room cooler in the crane cab

- Ⓐ 12 m main boom
- Ⓑ 16.4 m main boom
- Ⓒ 20.75 m main boom
- Ⓓ 29.5 m main boom
- Ⓔ 38.3 m main boom
- Ⓕ 47 m main boom
- Ⓖ 12 m boom + auxiliary hook
- Ⓗ 16.4 m boom + auxiliary hook
- Ⓙ 20.75 m boom + auxiliary hook
- Ⓝ 29.5 m boom + auxiliary hook
- Ⓚ 38.3 m boom + auxiliary hook
- Ⓛ 47 m boom + auxiliary hook
- Ⓜ 47 m boom + 8.4 m jib (offset 2°)
- Ⓝ 47 m boom + 14.7 m jib (offset 2°)
- Ⓞ 47 m boom + 21 m jib (offset 2°)
- Ⓟ 47 m boom + 8.4 m jib (offset 45°)
- Ⓠ 47 m boom + 14.7 m jib (offset 45°)
- Ⓡ 47 m boom + 21 m jib (offset 45°)



# RATED LIFTING CAPACITY

**MAIN BOOM**  
# 12m - 47m Boom

(Performance A)

Working Radius (m)	12m Boom	16.4m Boom	20.75m Boom	29.5m Boom	38.3m Boom	47m Boom
3.0m	100.0	50.0	38.0			
3.5m	85.0	50.0	38.0			
4.0m	77.0	50.0	38.0	32.0		
5.0m	62.0	50.0	38.0	32.0		
6.0m	52.0	50.0	38.0	32.0	24.0	
7.0m	44.0	44.0	38.0	30.0	24.0	12.0
8.0m	37.5	37.5	36.2	27.0	23.2	12.0
9.0m	32.5	32.5	32.5	24.5	21.0	12.0
10.0m		28.5	28.5	22.4	19.1	12.0
11.0m		25.1	25.1	20.5	17.5	12.0
12.0m		22.3	22.3	18.9	16.2	12.0
14.0m			17.6	16.3	13.9	11.2
16.0m			13.5	14.1	12.2	9.8
18.0m				12.0	10.8	8.6
20.0m				9.7	9.6	7.6
22.0m				7.9	8.4	6.7
24.0m				6.4	7.2	5.9
26.0m				5.3	6.0	5.3
28.0m					5.0	4.7
30.0m					4.0	4.2
32.0m					3.1	3.6
34.0m					2.4	2.8
36.0m						2.2
38.0m						1.6
40.0m						1.1
<b>Minimum Boom Angle</b>	-	-	-	-	18*	24.5*

(unit: ton)

## MAIN BOOM WITH JIB ATTACHMENT LIFTING CAPACITY

# 47m Boom + 8.4m Jib attachment

( Performance A )

Working Radius (m)	2°		15°		30°		45°	
	Boom Angle	Load	Boom Angle	Load	Boom Angle	Load	Boom Angle	Load
9.0m	81.1*	5.60						
10.0m	80.2*	5.60						
11.0m	79.2*	5.60	81.0*	5.50				
12.0m	78.3*	5.60	80.0*	5.50				
14.0m	76.3*	5.60	78.0*	5.50	79.7*	5.25	81.0*	4.10
16.0m	74.3*	5.60	76.0*	5.50	77.7*	5.00	79.0*	3.95
18.0m	72.3*	5.60	74.0*	5.20	75.6*	4.75	76.9*	3.85
20.0m	70.1*	5.10	71.9*	4.65	73.6*	4.30	74.7*	3.75
22.0m	67.9*	4.40	69.7*	4.10	71.4*	3.90	72.6*	3.65
24.0m	65.7*	3.80	67.5*	3.60	69.1*	3.50	70.3*	3.35
26.0m	63.4*	3.30	65.2*	3.15	66.8*	3.10	67.9	3.05
28.0m	61.2*	2.85	63.0*	2.75	64.4*	2.75	65.3*	2.75
30.0m	58.8*	2.45	60.6*	2.45	62.0*	2.45	62.9*	2.45
32.0m	56.4*	2.15	58.2*	2.15	59.4*	2.15	60.3*	2.15
34.0m	53.8*	1.65	55.6*	1.85	56.9*	1.85	57.6*	1.85
36.0m			52.9*	1.30	54.2*	1.55	54.6*	1.60
38.0m					51.4*	0.90	51.6*	1.00
Minimum Boom Angle	49.5*		49.5*		48*		48.5*	

( unit: ton )

# 47m Boom + 14.7m Jib attachment

( Performance A )

Working Radius (m)	2°		15°		30°		45°	
	Boom Angle	Load	Boom Angle	Load	Boom Angle	Load	Boom Angle	Load
11.0m	81.0*	3.80						
12.0m	80.2*	3.80						
14.0m	78.4*	3.80	80.4*	3.80				
16.0m	76.7*	3.80	78.8*	3.65				
18.0m	74.9*	3.80	77.2*	3.40	79.6*	2.40		
20.0m	73.0*	3.80	75.5*	3.20	77.8*	2.30	80.0*	1.80
22.0m	71.1*	3.55	73.5*	3.00	75.9*	2.20	78.1*	1.75
24.0m	69.1*	3.35	71.6*	2.80	73.9*	2.10	75.9*	1.70
26.0m	67.1*	3.10	69.6*	2.65	71.9	2.00	73.8*	1.65
28.0m	65.1*	2.70	67.6*	2.50	69.8*	1.90	71.8*	1.60
30.0m	63.1*	2.35	65.6*	2.30	67.8*	1.85	69.4*	1.55
32.0m	61.0*	2.05	63.6*	2.05	65.8*	1.80	67.2*	1.50
34.0m	58.7*	1.75	61.6*	1.80	63.7*	1.70	65.1*	1.50
36.0m	56.5*	1.50	59.3*	1.55	61.4*	1.55	62.9*	1.45
38.0m	54.2*	1.30	56.9*	1.35	59.1*	1.40	60.5*	1.40
40.0m			54.5*	1.20	56.8*	1.25	58.0*	1.25
42.0m					53.9*	1.00	55.1*	1.10
Minimum Boom Angle	51*		51*		51*		52*	

( unit: ton )

# 47m Boom + 14.7m Jib attachment

( Performance B )

Working Radius (m)	2*		15*		30*		45*	
	Boom Angle	Load	Boom Angle	Load	Boom Angle	Load	Boom Angle	Load
11.0m	81.0*	3.80						
12.0m	80.2*	3.80						
14.0m	78.4*	3.80	80.4*	3.80				
16.0m	76.7*	3.80	78.8*	3.65				
18.0m	74.9*	3.80	77.2*	3.40	79.6*	2.40		
20.0m	73.0*	3.80	75.5*	3.20	77.8*	2.30	80.0*	1.80
22.0m	71.1*	3.55	73.5*	3.00	75.9*	2.20	78.1*	1.75
24.0m	69.1*	3.35	71.6*	2.80	73.9*	2.10	75.9*	1.70
26.0m	67.1*	3.10	69.6*	2.65	71.9*	2.00	73.8*	1.65
28.0m	65.0*	2.40	67.6*	2.50	69.8*	1.90	71.6*	1.60
30.0m			65.6*	2.30	67.8*	1.85	69.4*	1.55
32.0m					65.8*	1.80	67.2*	1.50
34.0m							65.1*	1.50
Minimum Boom Angle	62*		62.5*		62.5*		62.5*	

( unit: ton )

# 47m Boom + 21m Jib attachment

( Performance B )

Working Radius (m)	2*		15*		30*		45*	
	Boom Angle	Load	Boom Angle	Load	Boom Angle	Load	Boom Angle	Load
11.0m	80.0*	2.20						
12.0m	78.4*	2.20						
14.0m	76.8*	2.20	79.7*	2.00				
16.0m	75.1*	2.20	78.1*	1.85				
18.0m	73.5*	2.20	76.6*	1.75	80.0*	1.25		
20.0m	71.8*	2.20	74.9*	1.65	78.4*	1.20		
22.0m	70.1*	2.20	73.1*	1.55	76.7*	1.15	79.5*	0.90
24.0m	68.3*	2.05	71.4*	1.45	75.0*	1.10	77.7*	0.85
26.0m	66.5*	1.90	69.7*	1.40	73.2*	1.05	75.8*	0.85
28.0m			68.0*	1.30	71.2*	1.00	73.9*	0.80
30.0m			66.3*	1.25	69.2*	0.95	71.9*	0.80
32.0m					97.2*	0.90	69.8*	0.75
34.0m							67.6*	0.75
Minimum Boom Angle	62*		62.5*		62.5*		62.5*	

( unit: ton )

## Crane Specification

1. Description : 100ton lifting capacity truck crane
2. Model : KATO NK-1000
3. Specification
  - Maximum rated lifting capacity:
 

12.00 m Boom	100,000 kg x 3.0 m (16 parts of line)
16.40 m Boom	50,000 kg x 6.0 m ( 8 parts of line)
20.75 m Boom	38,000 kg x 7.0 m ( 6 parts of line)
29.50 m Boom	32,000 kg x 6.0 m ( 5 parts of line)
38.30 m Boom	24,000 kg x 7.0 m ( 4 parts of line)
47.00 m Boom	12,000 kg x 12.0 m ( 2 parts of line)
Rooster Sheave	7,000 kg x 22.0 m ( 1 part of line)
47.0m Boom, 8.4 m Jib (offset 2*)	5,600 kg x 18.0 m ( 1 part of line)
47.0 m Boom, 14.7 m Jib (offset 2*)	3,800 kg x 20.0 m ( 1 part of line)
47.0m Boom, 21.0 m Jib (offset 2*)	2,200 kg x 26.0 m ( 1 part of line)
  - Boom length : 12.0 m ~ 47.0 m
  - Jib length : 8.4 m ~ 21.0 m
  - Maximum lifting height
    - Boom : 47.5 m
    - Jib : 69.0 m (with 47.0m main boom & 21.0m jib)
  - Center to center of extended outriggers
    - : 8,600 mm (fully extended)
    - : 6,600 mm (intermediately extended 1<sup>st</sup> section)
    - : 4,800 mm (intermediately extended 2<sup>nd</sup> section)