

NK-300VR



Address inquiries to :

<http://www.kato-works.co.jp>

NOTE : Illustrations may include optional equipment. KATO products and specifications are subject to improvements and changes without notice.
Before you use this crane, study the instruction manual thoroughly and follow the instructions it contains.
Some differences may arise between the machine delivered and the photographs in the catalogue.
The actual colours of the body and interior may appear slightly different from those shown in this catalogue due to the limitations of photography and printing.



KATO
QUALITY & EXPERIENCE
SINCE 1895

KATO WORKS CO.,LTD.

9-37, Higashi-ohi 1-chome, Shinagawa-ku, Tokyo 140-0011 Japan.
Tel. : Head Office Tokyo(03)3458-1111
Overseas Marketing Department Tokyo(03)3458-1115
Fax. : Tokyo(03)3458-1163

KATO

NK-300VR

FULLY HYDRAULIC TRUCK CRANE

Maximum rated lifting capacity: 30t×3.0m

Maximum boom length: 34.0m

Engine output: 213kW/2,300min⁻¹(ISO Net)



Progress to the Next Stage

KATO WORKS CO.,LTD.

POWERFUL AND ECO-FRIENDLY

**Closer!
Higher!
Farther!**

Solid 34m **SUPERBOOM** combined with 13.8m **fly jib** offers you steady operation and wider working ranges in narrow spaces.



Advanced "SUPERBOOM"

- Max. boom length — 34 m
- Fly jib length — 8.3 m & 13.8 m
- Max. lifting height — 34 m (boom)
48 m (boom + fly jib)

Wide working ranges in narrow spaces

- Max. derricking angle — 82°
- Fly jib with 3 offset angles — 5°, 25°, 45°
- Small tail slewing radius — 3.37 m

Wide & roomy operator's cabin

- Operating lever system — ISO Type
- Safe load indicator — ACS COMPULOAD with working range limiting function

Compact body with better mobility

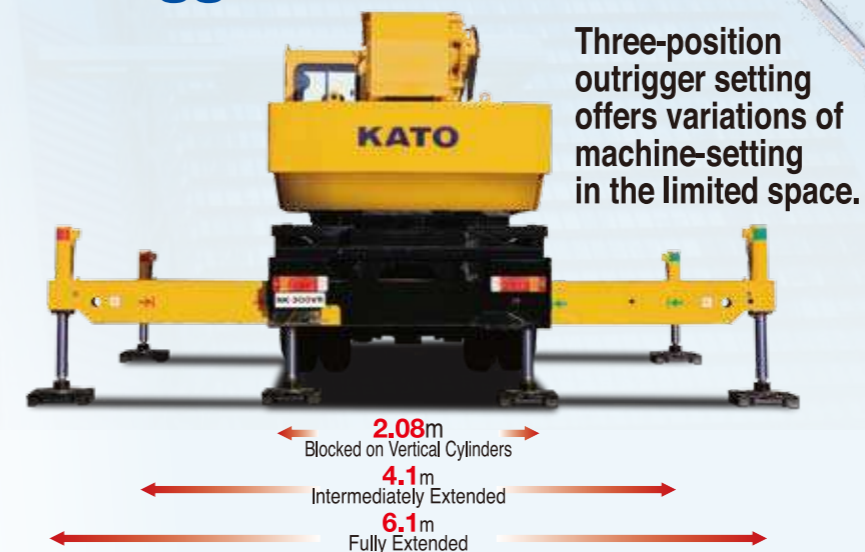
- Overall length — 12.65 m
- Overall height — 3.8 m
- Min. turning radius — 11.5 m

New engine FAW CA6DL1-29E3

- Conformity regulation — Euro III Engine
- Max. output — 213 kW
- Max. torque — 1,150 Nm



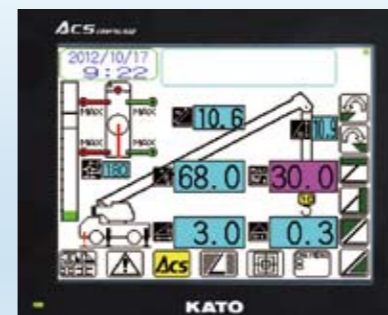
Outrigger width



Three-position outrigger setting offers variations of machine-setting in the limited space.

Wide & roomy operator's cab for the safe operation

New ACS Moment Limiter Compuload (MS-200) with working range limiting function.



- Easy touch panel operation
- High quality color display
- Working range limiting function

